

Project Information

- Square Footage: 4,500 sf
- Completion Date: Winter 2006

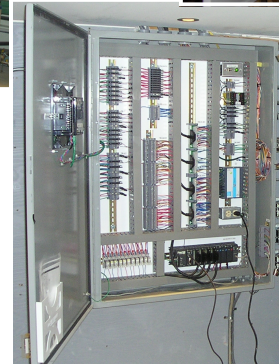
Design Engineering

- 740 foot standing column well .
- Variable frequency drive engaged for well water flow control and energy efficiency.
- Water to water ground source heat pumps utilized in the central plant providing three stages of heating or cooling, depending on the current HVAC mode.
- Industrial geo-exchange control system with an extremely easy to use interface.
- Boiler installed for emergency heat and domestic hot water.

System Integration

- Control panel design and fabrication
- Signal termination box fabrication
- Controller programming
- Furnished all instrumentation
- Commissioning the geo-exchange system.
- Remote connectivity via VPN.

Catawamteak incorporates an **ICDS** custom designed, programmed and fabricated control panel to easily and economically operate our design-built HVAC system. A structured wireless access IT network, designed and installed by **ICDS** staff, allow the owner to seamlessly and securely access the internet from any point within or nearby the perimeter of the house. Our HVAC system is based upon economical and ecologically friendly geothermal heat exchange design principles. The custom designed HVAC control panel boasts a user-friendly touchscreen allowing the user to easily view and change system setpoints and operational information based on seasonal need and occupancy.



ICDS

Innovative Construction & Design Solutions, LLC

419A Whitfield Street
Guilford, CT 06437
P: (203) 453-8596
F: (203) 453-7012
info@icdsllc.com