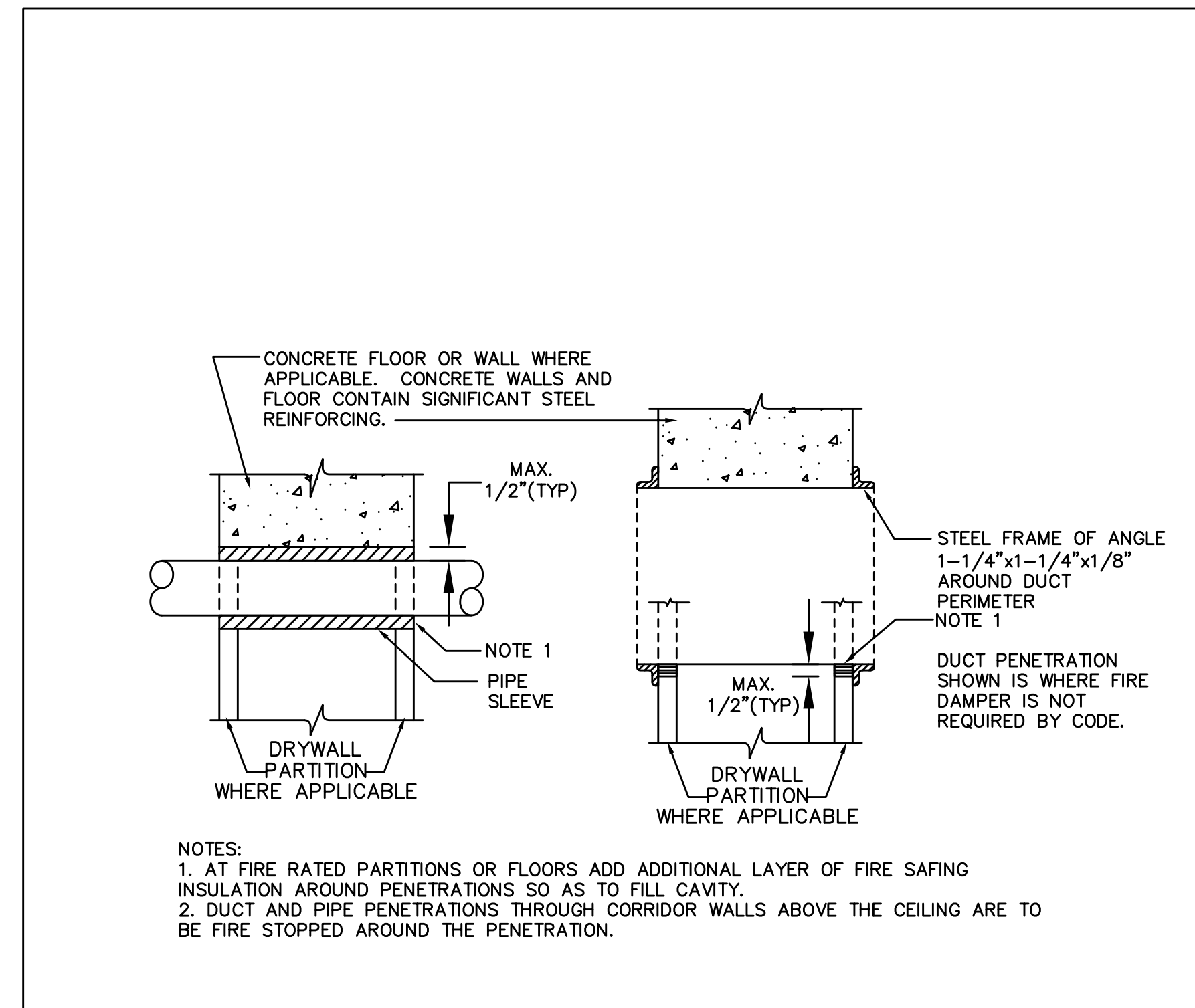


- NOTES:
1. ANY CLEARANCE BETWEEN FIRE-RATED WALL OR PARTITION AND DAMPER SLEEVE OR DAMPER SHALL BE FILLED WITH FIRE-RESISTANT PACKING ON ALL SIDES TO MAINTAIN FIRE RATING.
 2. DAMPER BLADES SHALL BE OUT OF AIRSTREAM TYPE "3A, 3B, 7 OR 8" (SEE SMACNA FIRE DAMPER AND HEAT STOP GUIDE - 2ND EDITION PAGE 9 OR NEWER VERSION IF APPLICABLE) WHEN OPEN 100% FREE AREA IS REQUIRED. WHEN DUCT DIMENSIONS REQUIRE MULTIPLE DAMPER SECTIONS, TYPE "2" MAY BE USED.
 3. PROVIDE SPRING LOADED CLOSURE FOR ALL FIRE DAMPERS.
 4. WHEN DUCTWORK IS INSULATED OR LINED, PROVIDE INSULATED ACCESS DOOR.
 5. ACCESS DOOR SHALL BE 12" X 12" OR LARGER IF REQUIRED FOR FUSIBLE LINK REPLACEMENT.
 6. TYPE "1" FIRE DAMPERS (BLADES IN AIR STREAM) MAY BE SUBSTITUTED FOR TYPE "3A OR 3B" WHERE VELOCITIES ARE UNDER 500 FPM IN LOW PRESSURE DUCT SYSTEMS ONLY.
 7. INSTALLATION SHOWN AS AN EXAMPLE. SPECIFIC INSTALLATION SHALL CONFORM WITH MANUFACTURER'S, UL APPROVED INSTRUCTIONS.
 8. PROVIDE SPRING LOADED SHUTTERS FOR HORIZONTAL MOUNTED LOCATIONS.

FIRE DAMPER DETAIL

SCALE: NTS



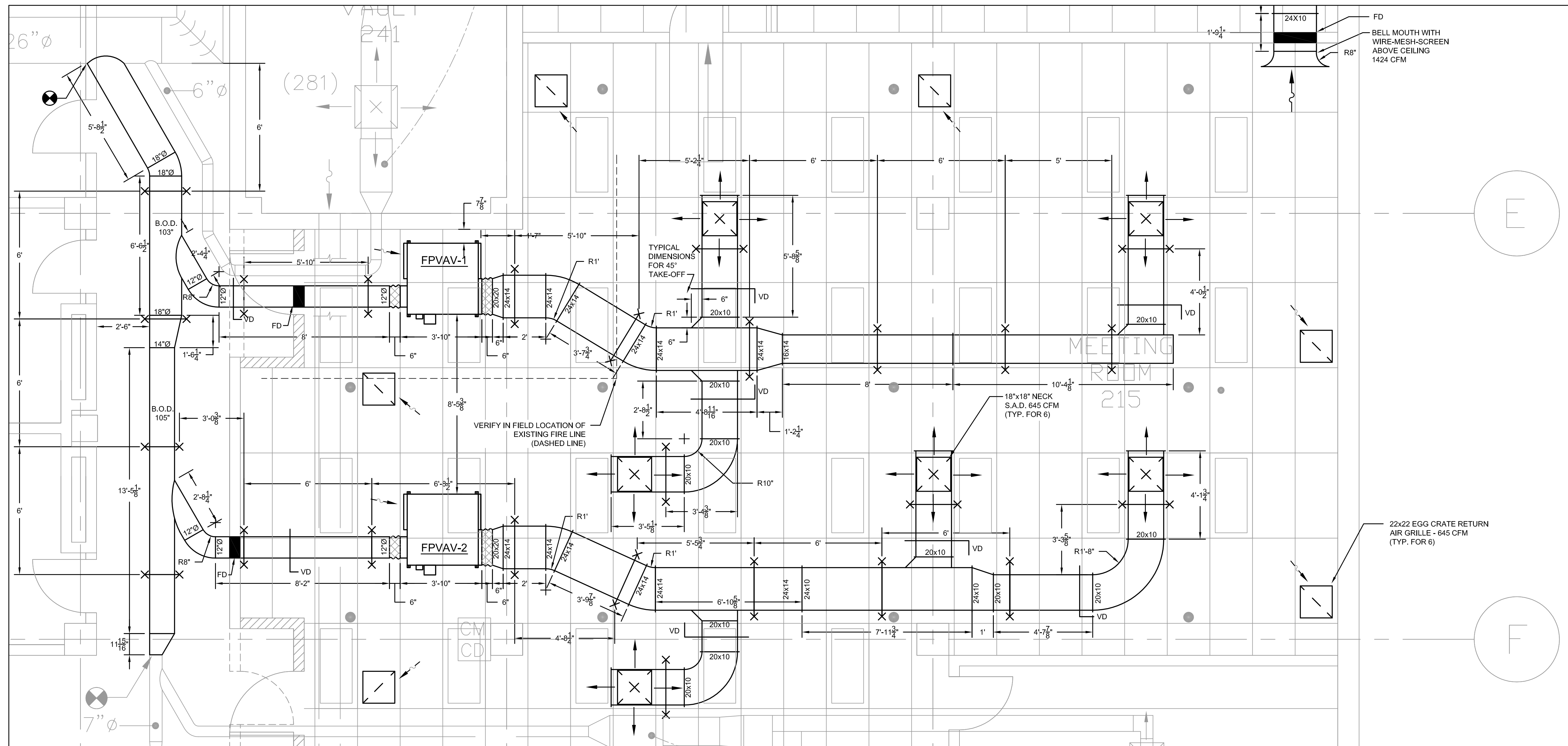
- NOTES:
1. AT FIRE RATED PARTITIONS OR FLOORS ADD ADDITIONAL LAYER OF FIRE SAFING INSULATION AROUND PENETRATIONS SO AS TO FILL CAVITY.
 2. DUCT AND PIPE PENETRATIONS THROUGH CORRIDOR WALLS ABOVE THE CEILING ARE TO BE FIRE STOPPED AROUND THE PENETRATION.

PENETRATION DETAIL

SCALE: NTS

NOTES:

1. AHU IS ORIENTED 180° FROM THE DESIGN DRAWINGS BASED ON THE ACCESS REQUIREMENTS OF THE SUBMITTED AND APPROVED AHU (SUBMITTAL NO. 15500-1A).
2. REMOVABLE SPOOL PIECE (FLANGED CONNECTORS) TO MAINTAIN COIL PULL CLEARANCE
3. COIL HOOK-UP PIPED SUCH THAT CLEARANCE FOR ACCESS TO THE FAN SECTION, MOTOR STARTER AND CONTROL BOXES IS MAINTAINED.
4. ALL RECTANGULAR DUCTWORK SPOOL PIECES AND FITTINGS ARE 26 GA. G-60 COATED GALVANIZED STEEL OF LOCK FORMING GRADE. TRANSVERSE JOINTS ARE AS LOCATED USING STANDING SEAM CONNECTORS (SMACNA T-11, 1" @ 22GA.) AND/OR INTERMEDIATE REINFORCEMENT (1" @ 16 GA. ANGLE).
5. ALL ROUND DUCTS ARE 24 GA. G-60 COATED GALVANIZED STEEL OF LOCK FORMING GRADE. ROUND DUCT CONSTRUCTION IS LONGITUDINAL SEAM AND/OR SPIRAL SEAM WITH BEADED ENDS. DUCTS ARE ATTACHED USING BEADED END SLEEVES (SMACNA RT-1).
6. RECTANGULAR AND ROUND DUCT HANGERS ARE 22 GA., 1" STRAP HANGERS LOCATED AS SHOWN.



DETAIL 3

SCALE: 3/8" = 1'

80 Clapboard Hill Rd.
Guilford, CT 06457
Phone: (203) 458-8596
Fax: (203) 458-7012
info@icdsllc.com



SAMPLE SHOP DRAWING
SOMEWHERE, USA
HVAC
DUCT FABRICATION PLAN

Project No.:	Drawn By:
-	SDF
Date:	Design By:
--/--	-
Scale:	Check By:
AS NOTED	-

Drawing No.
HV-X

Rev.	Date	Description